



HEADLIGHT

HEADLIGHT BEAM TESTERS

- > CENTRAFARI MECCANICO
- > MECHANICAL HEADLIGHT TESTER
- > MECHANISCHES SCHEINWERFEREINSTELLGERÄT

LX



OPTIONAL

LED XENON / ALOGEN

M E C H A N I C A L

HBA 260

IT

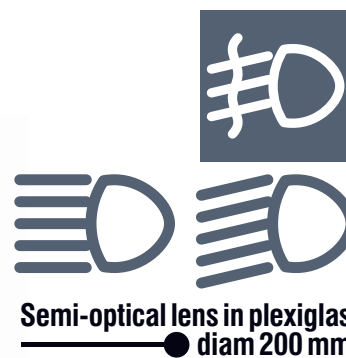
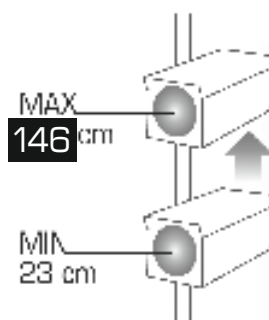
Centrafari meccanico, con luxmetro digitale, visore a specchio, base su ruote, palo con scorrimento con pattini di precisione in nylon autolubrificante, base fissa e pannello regolabile.

EN

Mechanical headlight beam setter with graduated digital luxmeter, based on wheels, mirror visor. Fixed base and adjustable checking panel.

DE

Mechanisches Scheinwerfereinstellgerät mit Digitalluxmeter, basiert auf Rädern, Spiegel Visier. Fixierte Platte und regulierbare Platte.



DIGITAL LUXMETER

STANDARD



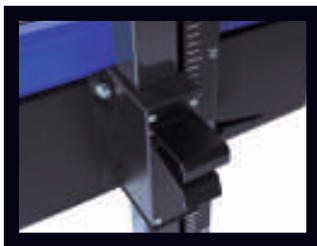
Visore a specchio alta precisione
High precision GLASS mirror visor
Präzisionsspiegelvisor



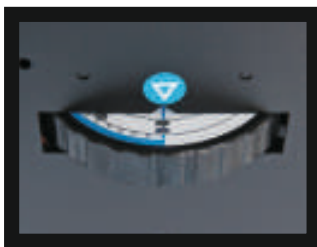
/D
Luxometro digitale
Digital Luxmeter
Digitalluxmeter



Palo fisso 1660 mm
Fixed column 1660 mm
Fixierte Säule 1660 mm



Scorrimento a pinza
e scala graduata
**Sliding system with locking
clamp and graduated scale**
Verschiebung mit Klemmblock
und abgestufte Skala



Pannello regolabile 0-4%
Adjustable checking panel 0-4%
Regulierbares Neigungspanel 0-4%

MECHANICAL

**HBA
260**

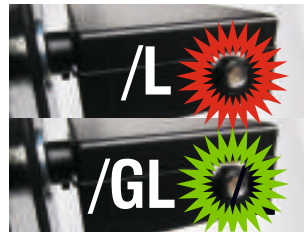
OPTIONAL



/Z
Distanziatore/puntatore
supplementare
Spacer/centering bar
Zusatzerferner



Pannello regolabile -2+6%
Adjustable checking panel -2+6%
Regulierbares Neigungspanel -2+6%

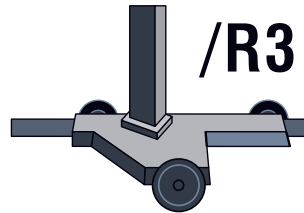


/L
Visore laser
Laser visor
Laservisier

/L1
Puntamento laser
Laser pointing system
Laser Strahlsystem



/L2
Visore laser + Puntamento laser
Laser.visor + Laser.pointing.system
Laservisier+ Laser Strahlsystem



/R3
3-wheels rail base



/R
H-base with double rails



Copertina antipolvere
Anti-dust cover
Staubschutzhäube



**LED XENON /
ALOGEN
optional**

Trasporto Shipping Fracht
Smontato Unassembled Demontiert



1 PC CARTON BOX cm 170x60x45 - Kg. 38
5 PCS PALLET cm 170x60x175(H) - Kg. 196

